



### TABLE OF CONTENTS

Installing Menu Builder Software to a PC .....	2
Creating Bin Setup using Default Menu. ....	3
Creating Custom Menu Recipes .....	6
Loading Recipe Files to Holding Bin .....	8



355 EAST KEHOE BLVD. ~ CAROL STREAM, IL, 60188, USA

PHONE: 630-462-8800 ~ TOLL FREE: 1-800-PCASTLE

**Installing Menu Builder Software**

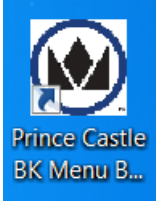
- 1 Copy the Install\_Prince\_Castle\_BK\_Menu\_Builder\_x.x.exe file from the enclosed flash drive onto the desktop of a PC.

Name	Date modified	Type	Size
Install_Prince_Castle_BK_Menu_Builder_1.7	11/29/2017 12:57 ...	Application	56,681 KB

- 2 Double click the application on the desktop,



- 3 Select 'Run' and follow the instructions to complete installation. A shortcut will be added to your desktop.

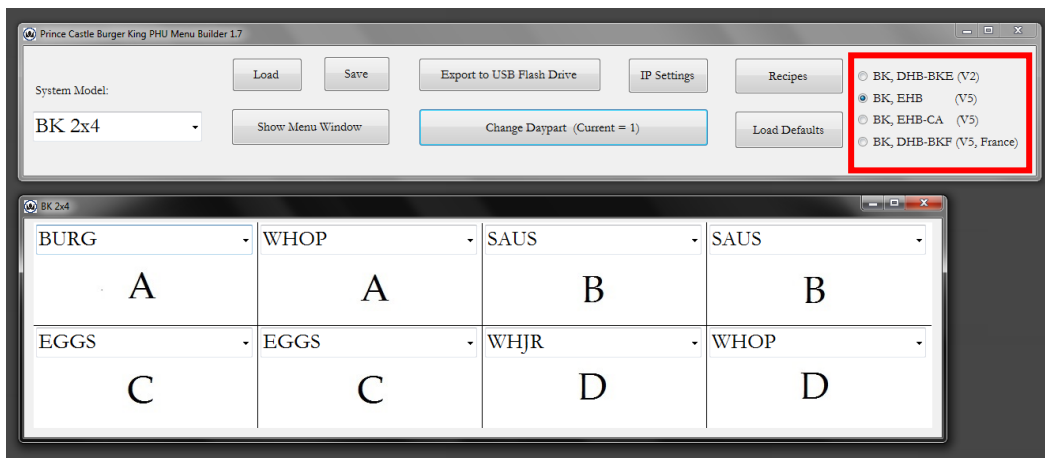


Double click on the shortcut to open the Menu Builder Program

**Creating Bin Setup Using Default Menu**

**1** Select the type of PHU you have. This can be found on the serial plate on the back of the PHU.  
Examples:

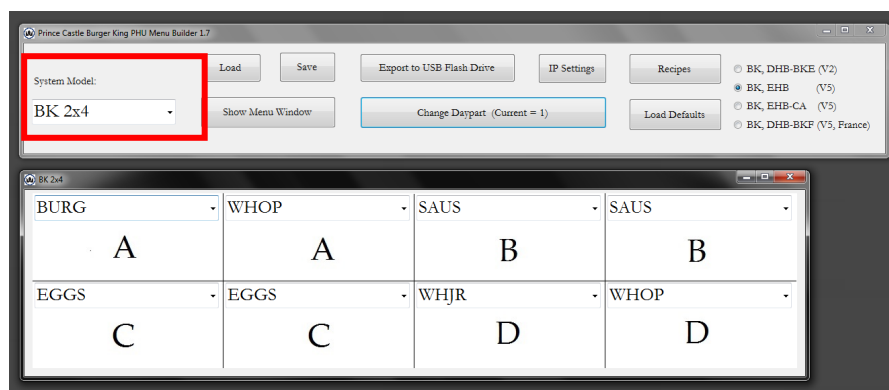
- DHB-BK24AE -> Select BK, DHB-BKE (V2)
- EHB24CE -> Select BK, EHB (V5)
- EHB34A-CA -> Select BK, EHB-CA (V5)
- DHB-BK34AF -> Select BK, DHB-BKF (V5)



**2** Select the system model of PHU you have. This is determined by the number of shelves, followed by the number of pans per shelf.

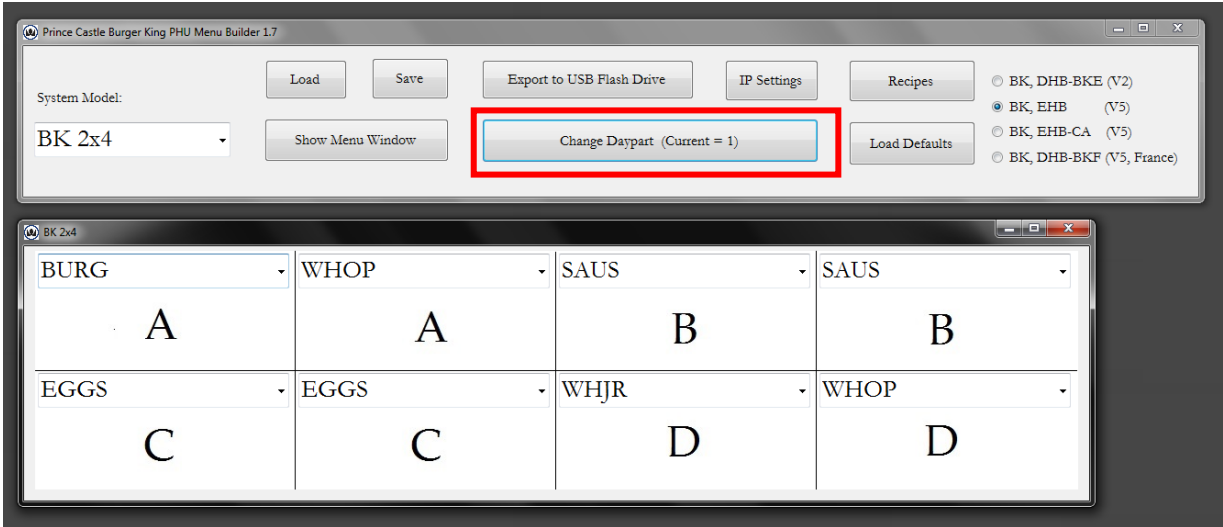
Examples:

- DHB-BK24AE -> Select BK 2x4
- EHB34ACE -> Select BK 3x4

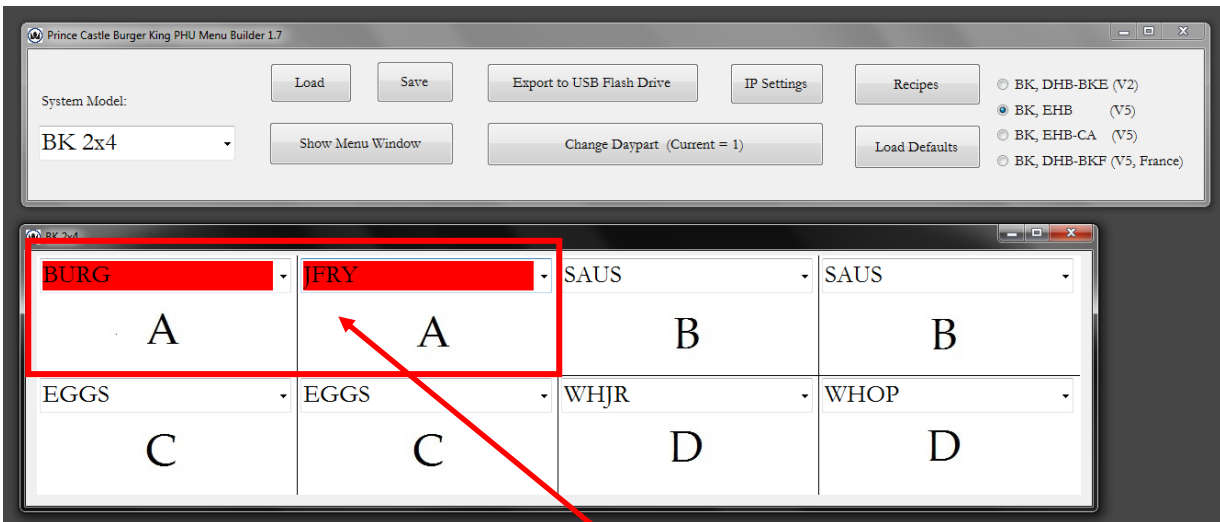


**Creating Bin Setup Using Default Menu**

**3** Select the Daypart to setup. You can setup up to six (6) dayparts by selecting the 'Change Daypart' button.



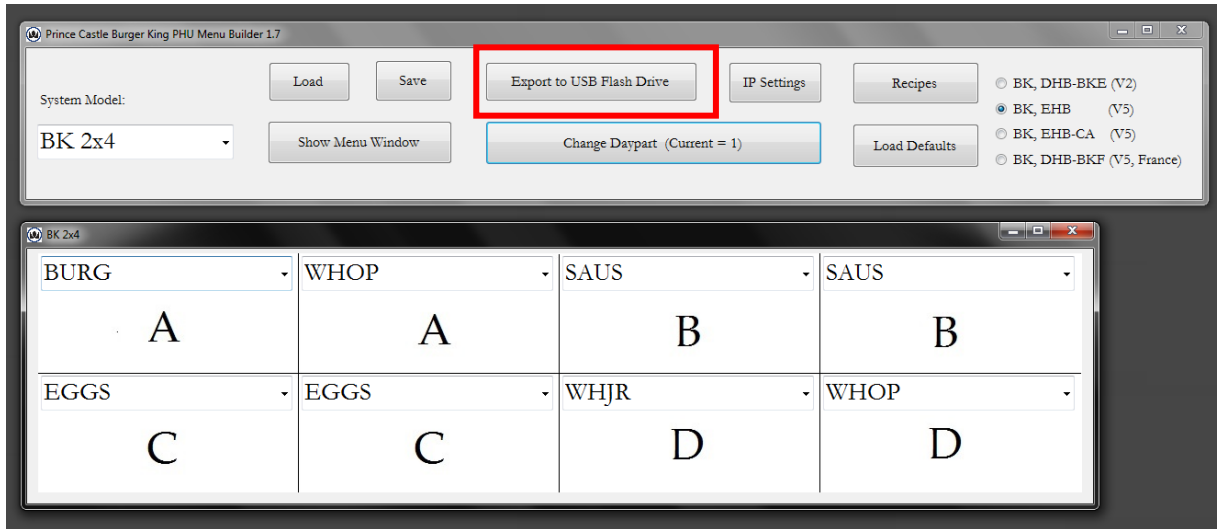
**4** Change the product in each location by picking the product from the drop down menu in each location. **You can only put products with the same recipe (temperatures) in the same zone. The products will be red if they are not compatible recipes.**



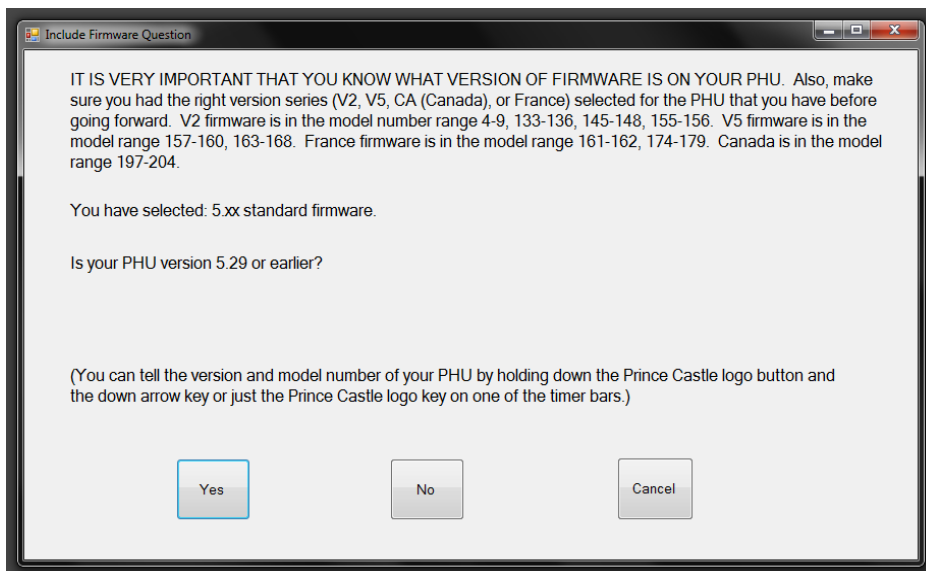
**Non compatible recipes  
in Zone A**

**Creating Bin Setup Using Default Menu**

- 5** Once all of your Dayparts are setup, you can export the menu to an external USB flash drive. Insert a USB flash drive into a USB port on your computer and select 'Export to USB Flash Drive'.

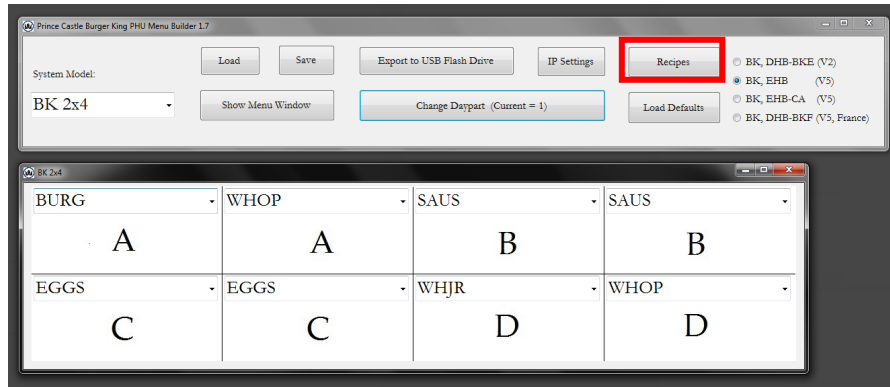


- 6** The dialog box that appears will be different depending on the model and type of PHU you are updating. Answer the question and the program will guide you saving the files to the USB flash drive. (Note, if you have a 3x4 EHB, you will be creating two (2) flash drives. One for board 1, and one for board 2) (If you have version 5.29 or earlier on your PHU, the download to the USB flash drive will include an update to version 5.30, which is the minimum version for the menu program to operate on).

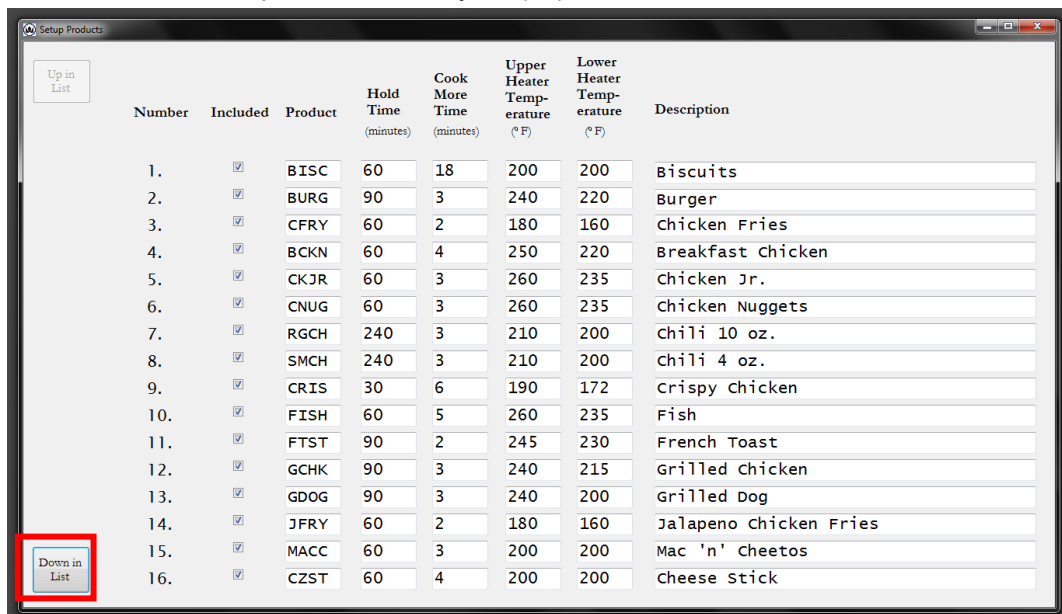


### Creating Custom Menu Recipes

- 1 The drop down selections available in step 4 on page 4 are driven by a Recipe file. When first loaded, the file is populated with default recipes. If you would like to add new menu items, start by selecting the 'Recipes' button.

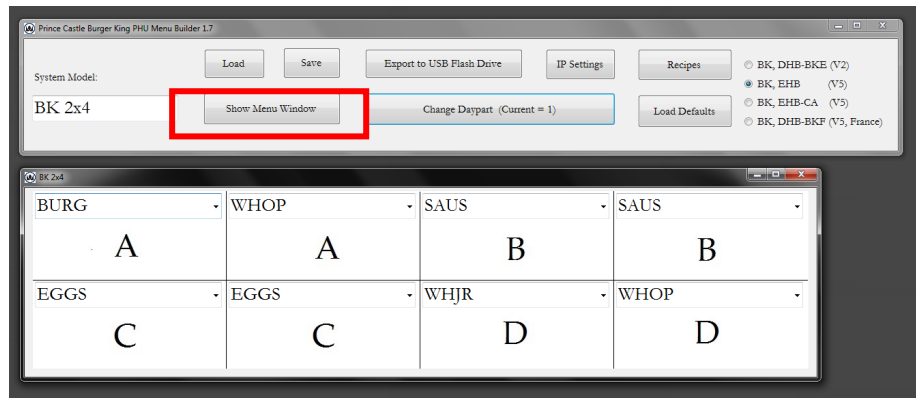
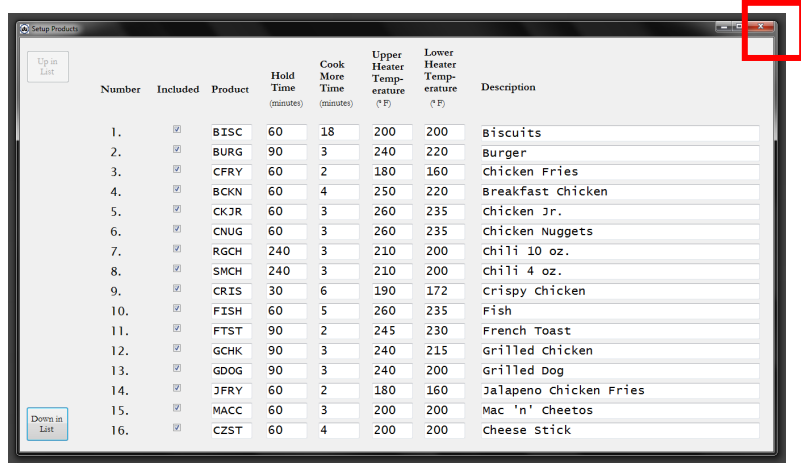


- 2 Add or change any of the items as desired. The product drop down menus will change accordingly. A checkmark in the 'Include' column determines which items are displayed in the drop down menu. The Temperatures need to be entered in degrees Fahrenheit. Use the 'Down in List' button to scroll down and see additional products. Twenty six (26) items can be added.

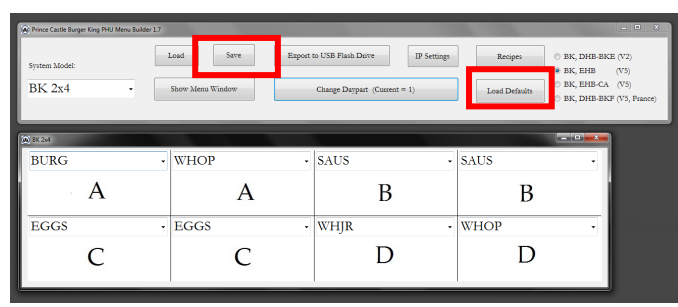


**Creating Custom Menu Recipes**

**3** Once all menu items are created, click the 'X' on the Setup Products page to close it. Then click the 'Show Menu Window' button to display the bin configuration. The drop down menus will now contain the new products that were entered.



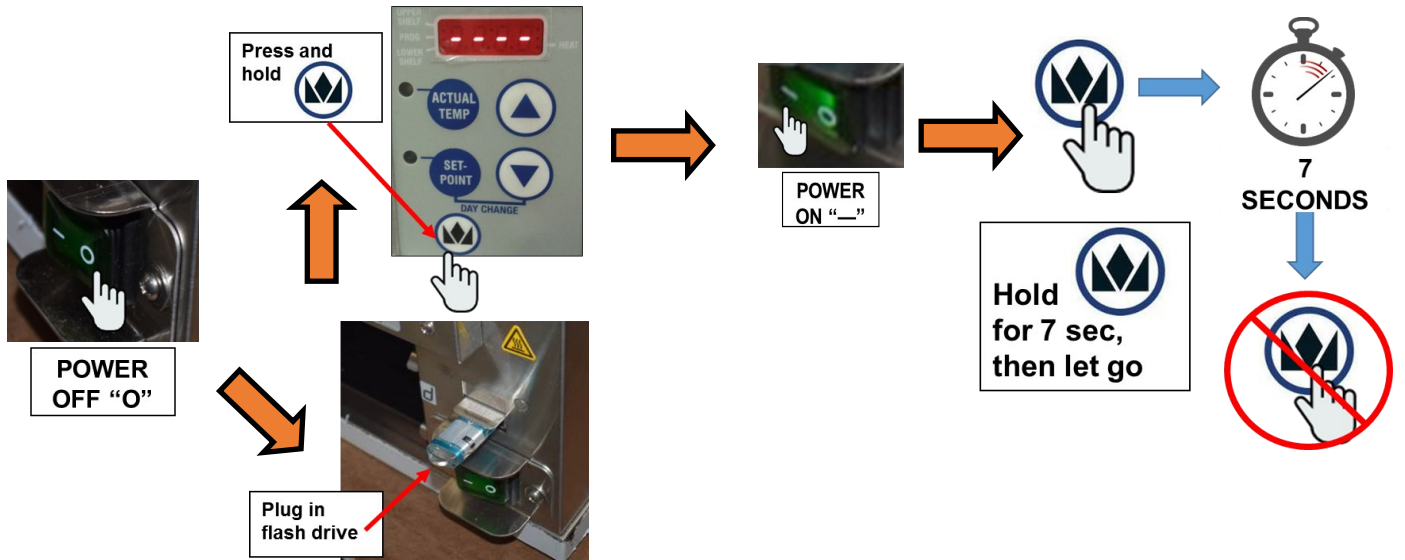
**4** Select 'Save' to save the Recipes to a file, which can be uploaded if lost, using the 'Load' button. (Note, this is not the file used to upload the menus to the bins. That file is created by 'Export to USB drive' button. The default menu items can be restored by selecting the 'Load Defaults' button. Configure the bin with the new recipes following the steps shown on page 3 thru 5.



**Loading Recipe Files to Holding Bin**

**1**

Use the USB created thru the steps on page 5 to transfer the menus to the holding bin. (Note: if updating a 3x4 EHB, you will need to update Board 1 and then Board 2. See page 9.



DISPLAY WILL GO THROUGH  → BL02 → BL01 → BL00 → BL02

**2**

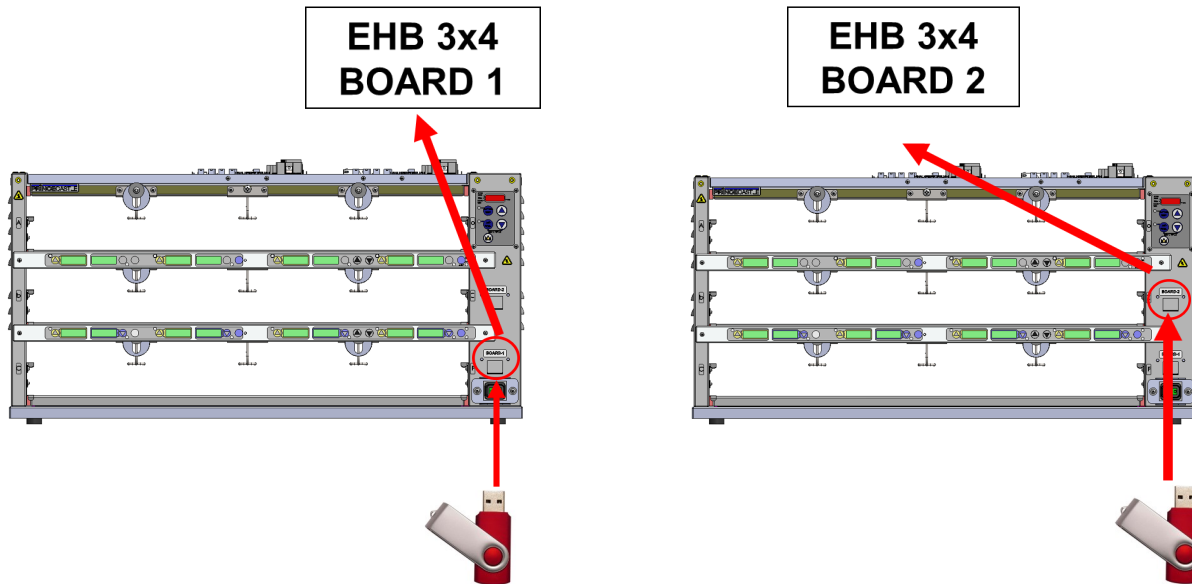
LETTER + NUMBER => PROGRAMMING DONE



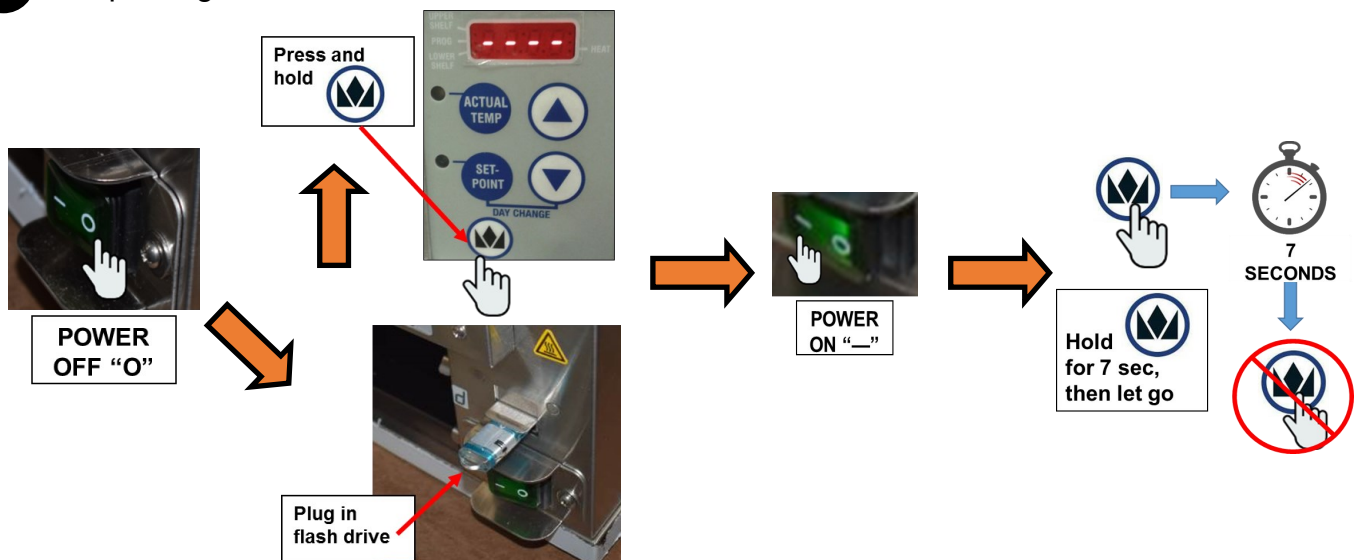


**Loading Recipe Files to Holding Bin**

If installing recipe files on a 3x4 EHB unit, update using USB for Board 1 first, and then Board 2.



**1 Updating Board 1**

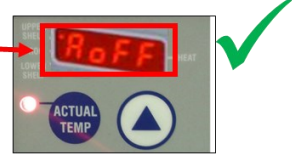


**Loading Recipe Files to Holding Bin**

DISPLAY WILL GO THROUGH  → BL02 → BL01 → BL00 → BL02

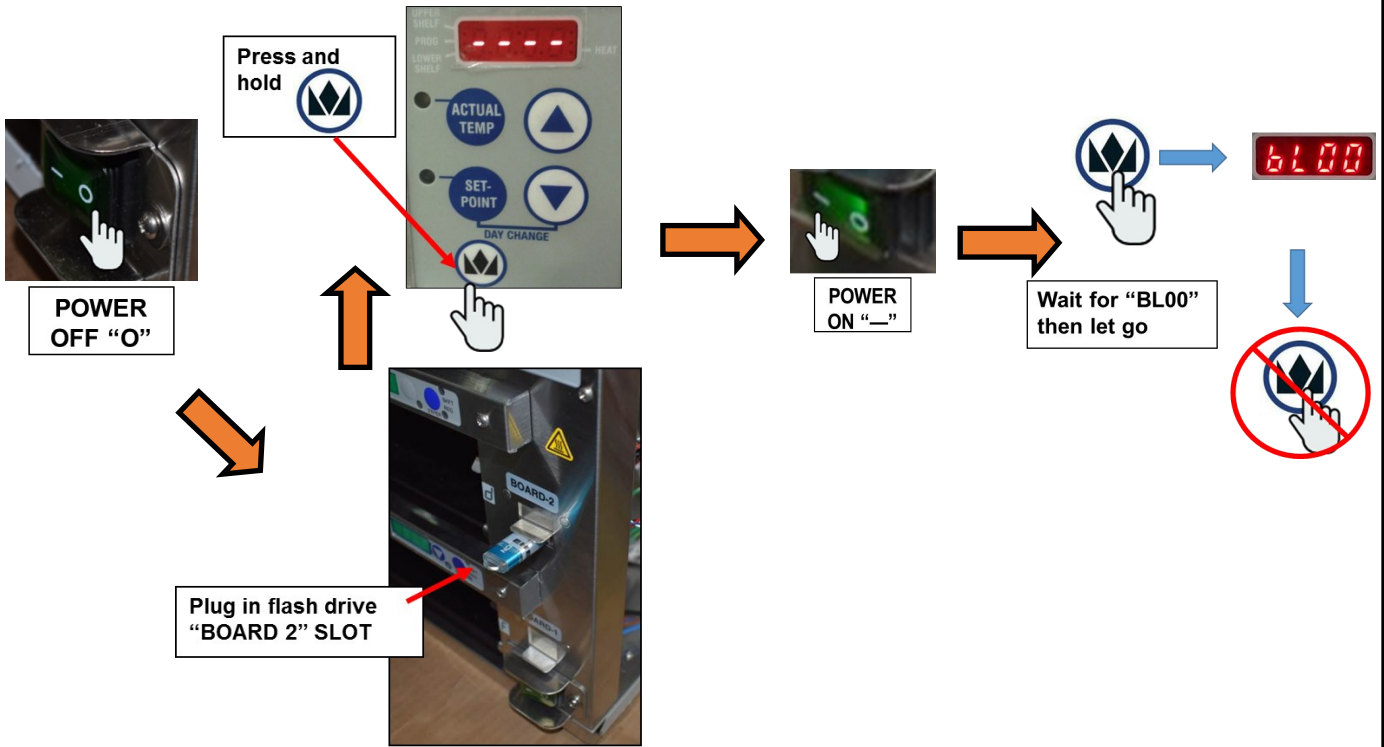
2

“AoFF” => BOARD 1 PROGRAMMING DONE



3

Updating Board 2



**Loading Recipe Files to Holding Bin**

DISPLAY WILL  
GO THROUGH



4

LETTER + NUMBER => PROGRAMMING DONE

